

Littleworth Reading Room

Proposed improvements

The Reading Room

Littleworth Reading Room lies at the heart of the village and provides a much-used and valued resource for the local community.

The Trustees of the Littleworth Reading Room charity are responsible for maintaining the facility for the benefit of the whole parish community.

The Reading Room was built as a First World War Memorial by Oriel College. The structure is a two storey building containing the Reading Room hall and a kitchen with toilet extension on the ground floor and a small one bedroom residential flat on the first floor.

The land and building were conveyed to the care of Trustees in 1923, with the specific wish of the donors (Oriel College):

‘that the Reading Room should be for the use of the whole parish and as such should promote the welfare and the happiness of all the inhabitants without distinction of class or creed’.



Littleworth Reading Room

Proposed improvements

Options appraisal

The Trustees are considering a range of options designed to improve the facilities provided by the Reading Room. The appraisal of options is being underpinned by the need to achieve the following objectives:

Primary Objectives

1. Provide disabled access to Reading Room.
2. Provide disabled toilet facilities for Reading Room.
3. Provide improved access to toilet facilities for those attending church functions, especially disabled persons.
4. Be financially viable.

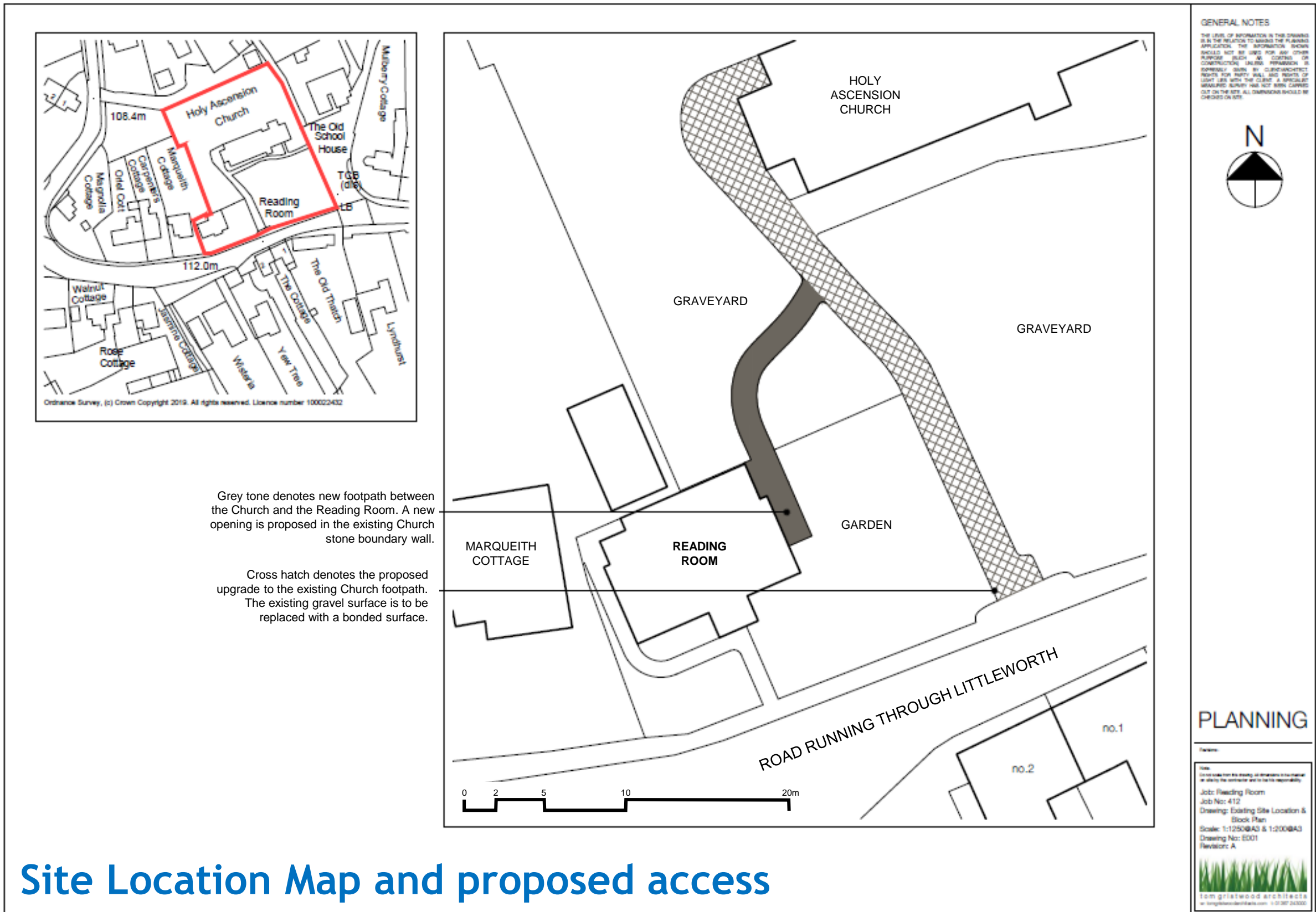
Secondary Objectives

1. Improve kitchen facilities for the Reading Room.
2. Improve acoustic properties of the Reading Room hall.
3. Improve access from Reading Room to the grass area at the eastern end of the Reading Room ground for occasions when temporary marque/gazebo facilities are required.



Littleworth Reading Room

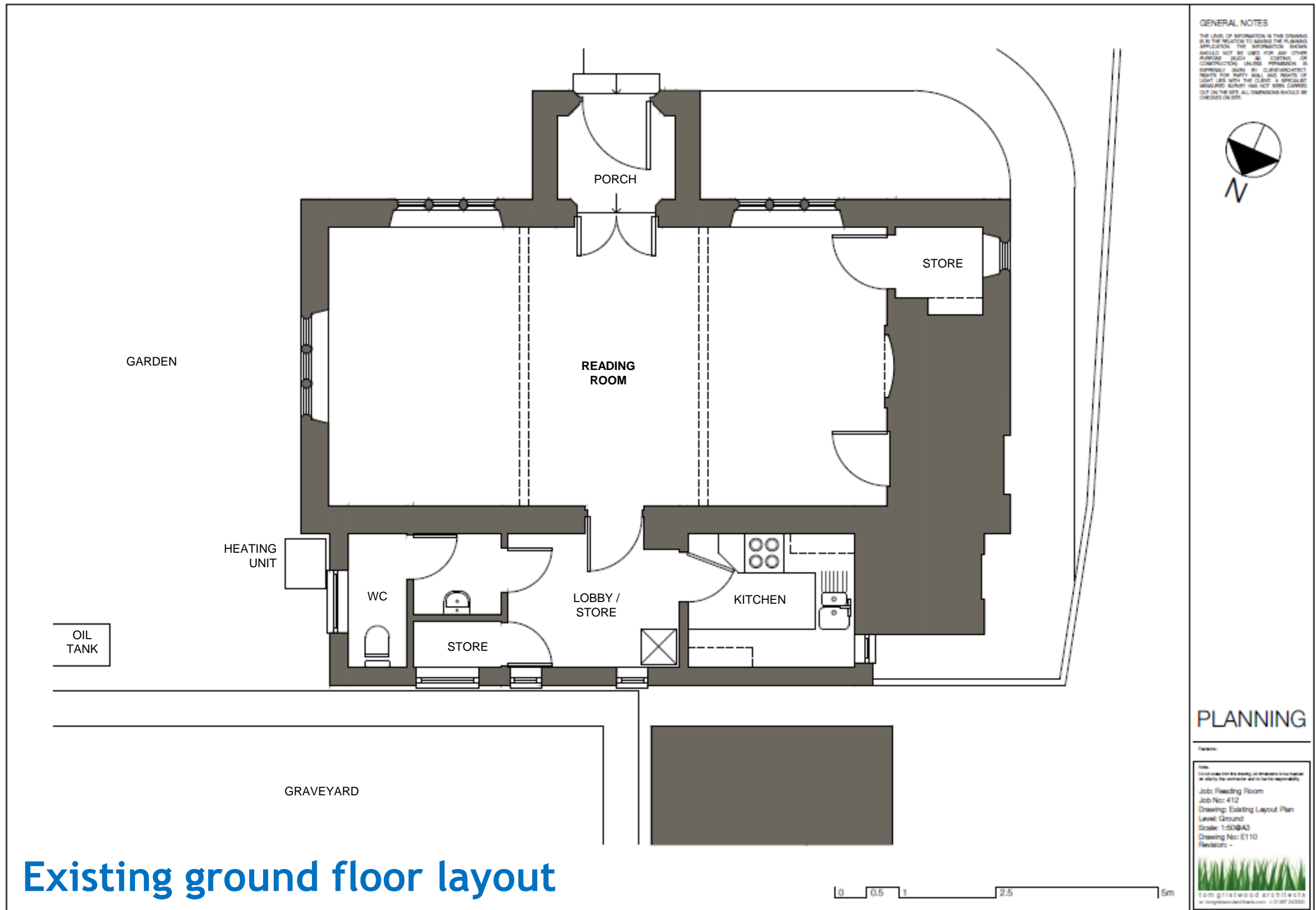
Proposed improvements



Site Location Map and proposed access

Littleworth Reading Room

Proposed improvements



Littleworth Reading Room

Proposed improvements

Options

The Trustees have been working closely with local architect Tom Gristwood and the Vale of White Horse District Council to develop a range of possible options for consideration. The first option listed has already received planning approval from the District Council.

Option 1 - Approved layout

Option 2 - Trustees preferred option

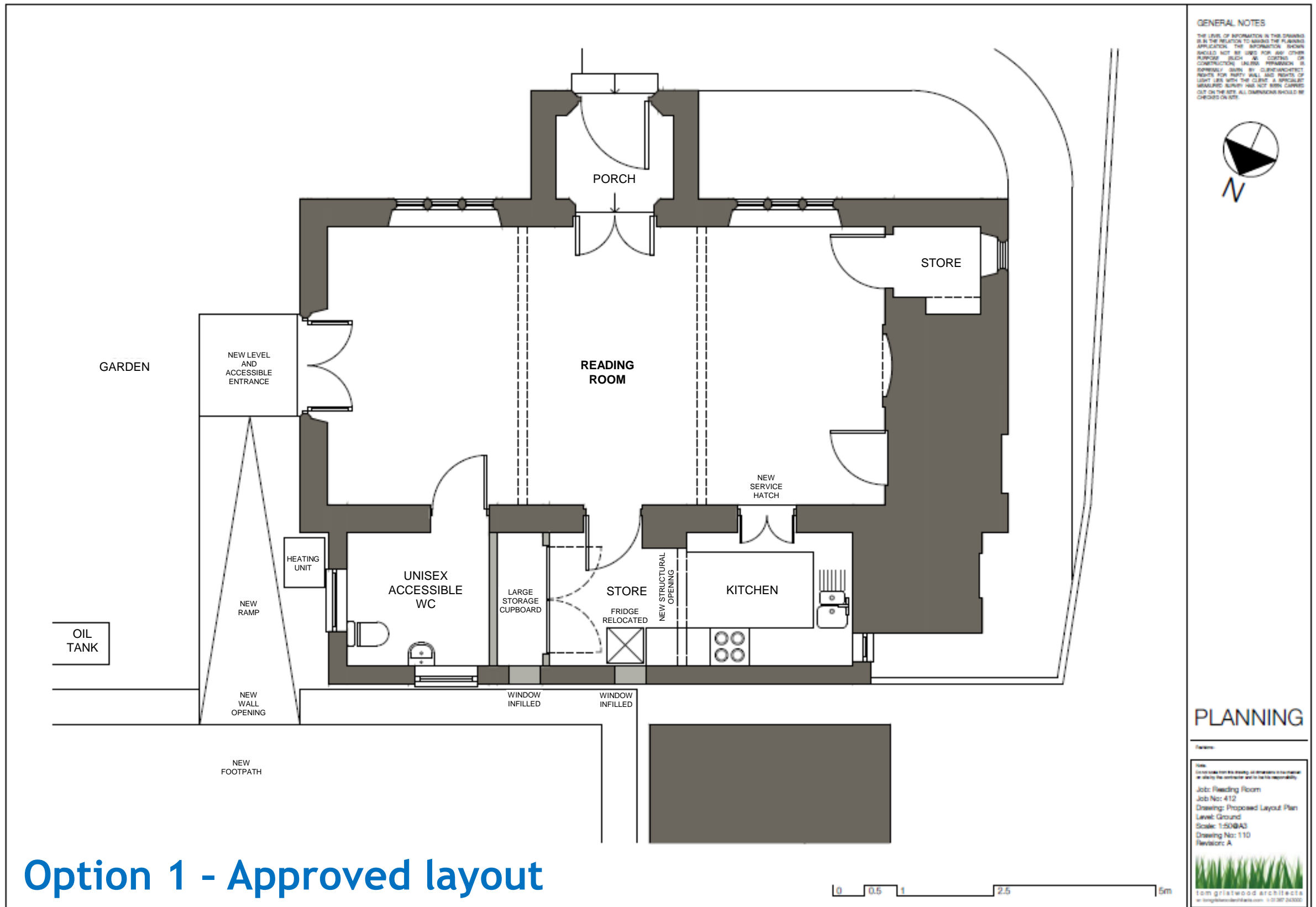
Option 3 - Trustees alternative option

Other variations and options have been considered, however, only three are presented for the purposes of consultation in order to receive feedback.



Littleworth Reading Room

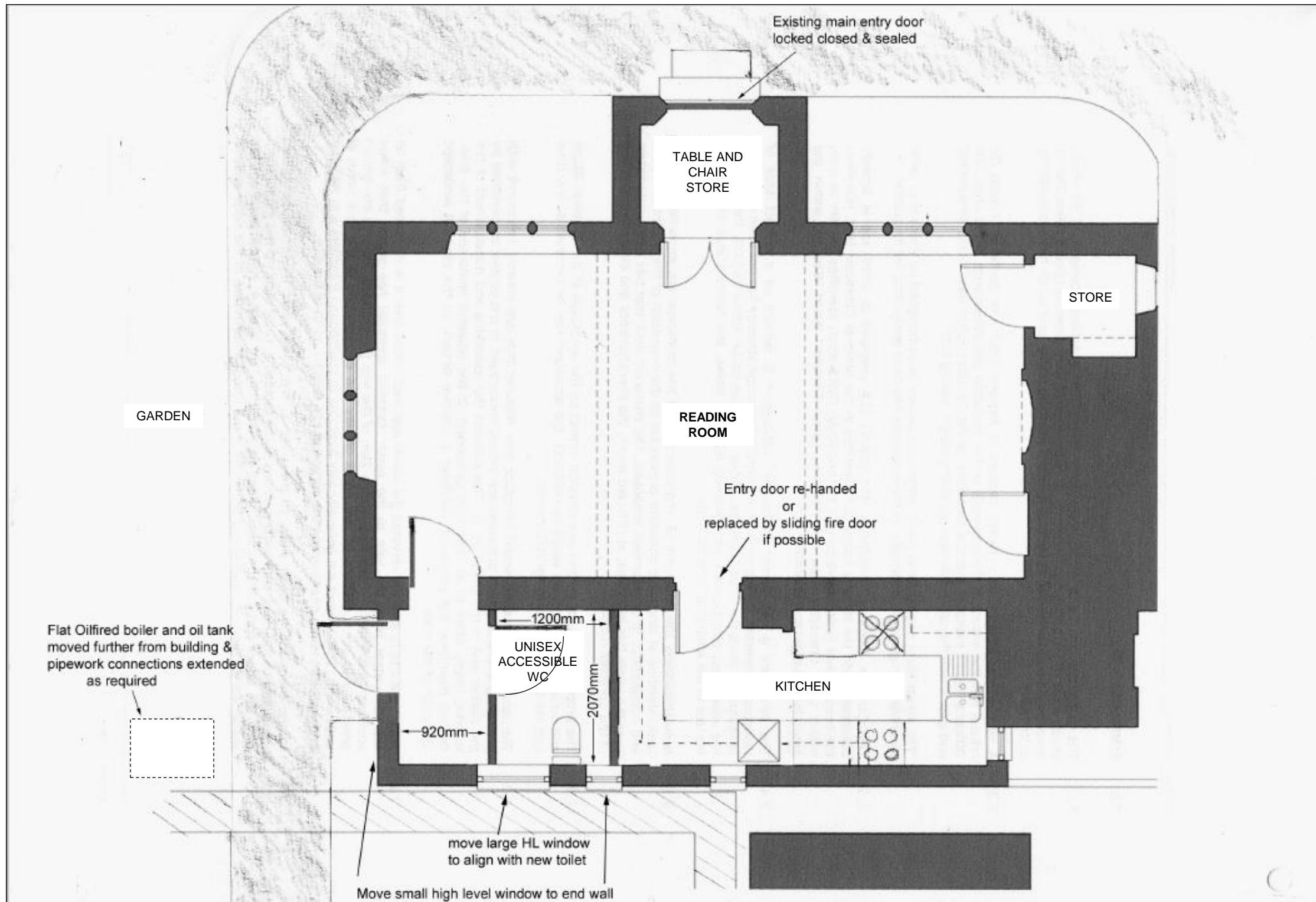
Proposed improvements



Option 1 - Approved layout

Littleworth Reading Room

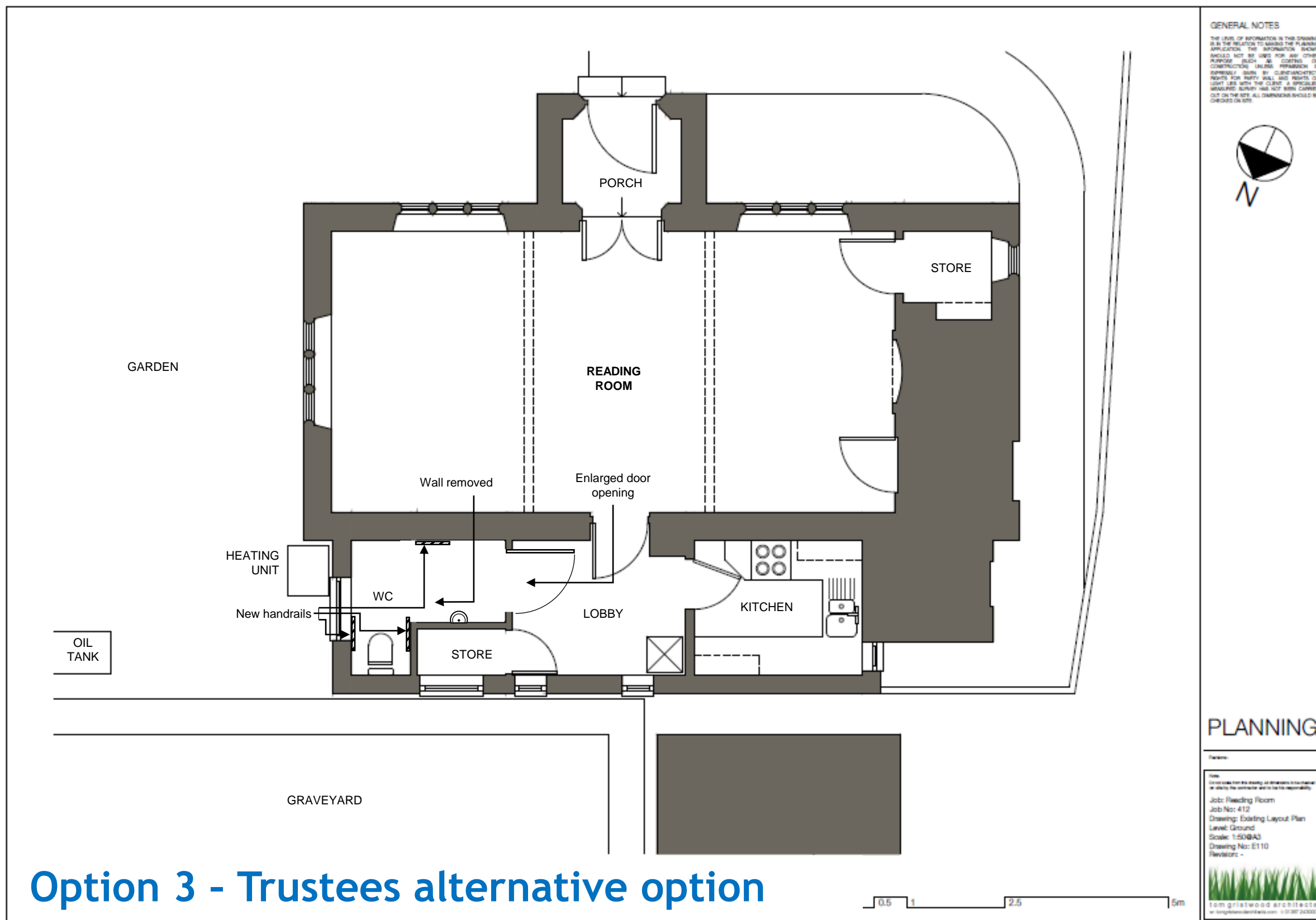
Proposed improvements



Option 2 - Trustees preferred option

Littleworth Reading Room

Proposed improvements



Littleworth Reading Room

Proposed improvements

Option	Disabled toilet	Disabled access to toilet	Disable access to Reading Room	Access to grass area	Improved kitchen area	Construction costs	Construction risk	External visual aesthetic	Internal visual aesthetic	Potential for unpleasant smells	Usability of the hall	Storage areas
1. Approved plan, double disabled access doors in end of building, new disabled toilet with new door opening direct into hall, hatchway access from kitchen.	Fully compliant	Good access	Good access	Good access	Enlarged kitchen area	Very high	High	Potentially detrimental	High potential to see directly into WC from hall	High	Reduced usability due to increase in access toilet doorways and external doors	No change
2. Trustees preferred option	Partly compliant	Good access	Good access	Good access	Enlarged kitchen area	Moderate	High	Minor detriment	No impact	Low	Minor reduction in usability due to access toilet doorway	No change
3. Trustees alternative option	Not compliant but improved	Moderate access	No access without ramps to access existing door	No direct access	No change	Low	Negligible	No impact	No impact	Low	No change	Minor change

Legend

	Low risk, low cost, meets objectives
	Medium to high risk, moderate cost, partially meets objectives
	Very high risk, high cost, fails to meet the objectives